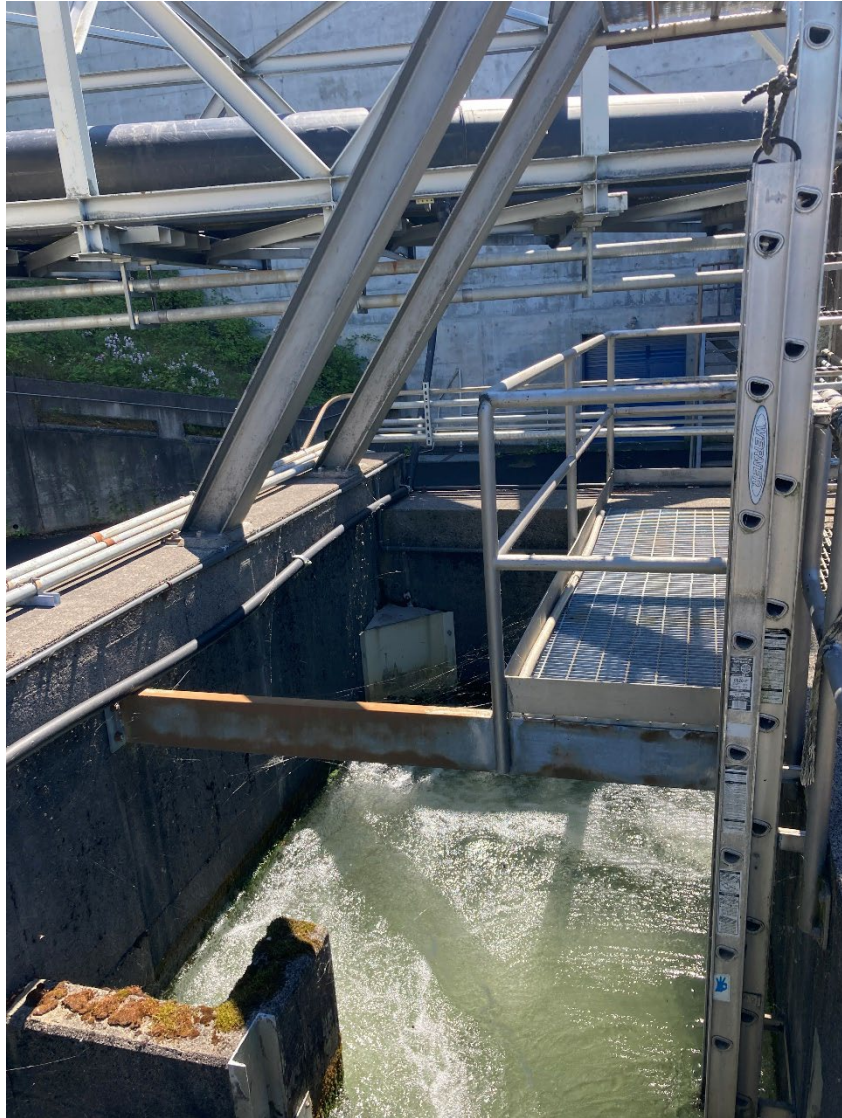


MEMORANDUM FOR THE RECORD**SUBJECT: 22BON046 MFR AFF Sockeye Mortality**

On 17 July, Project Biologists discovered one adult sockeye mortality found on the ground behind the AFF near the FERL (Fish Engineering Research Laboratory) bulkhead. The fish was scanned for PIT tags, inspected, and returned to the river. The second picture is the area from which this fish jumped out of the system.

- A. Species – Sockeye (*Onchorhynchus nerka*)
- B. Origin – NA
- C. Length – 50.8 cm
- D. Marks and tags – None
- E. Marks and Injuries found on carcass – None
- F. Cause and Time of Death – Unknown time, discovered on 17 July
- G. Future and Preventative Measures – None currently. The water level where this fish would have jumped out of the ladder does not change based on AFF operations. Current Project Biologists have never observed a fish mortality here. If more mortalities occur putting netting up above the ladder is possible.





Sincerely,
Project Fisheries